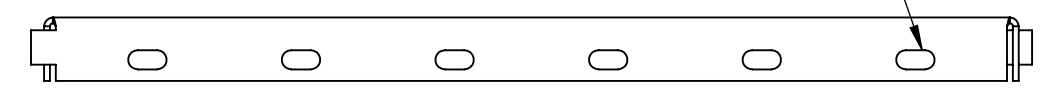
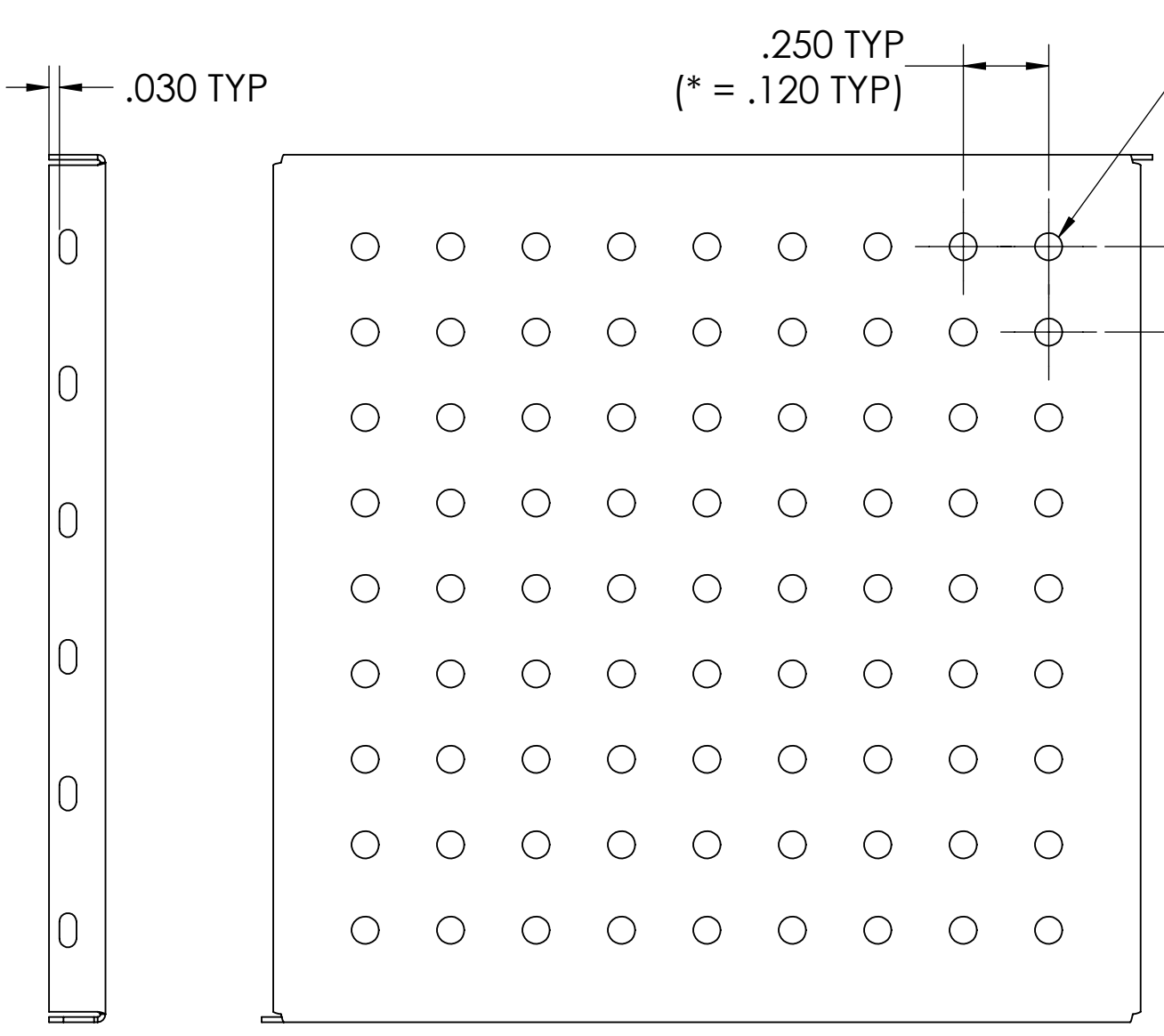


SV HOLE PATTERN

COVER SLOT OPTIONS	
TYPE	OPTION
S1	STANDARD (.050W X .100L)
S2	MINI (.035W X .070L)

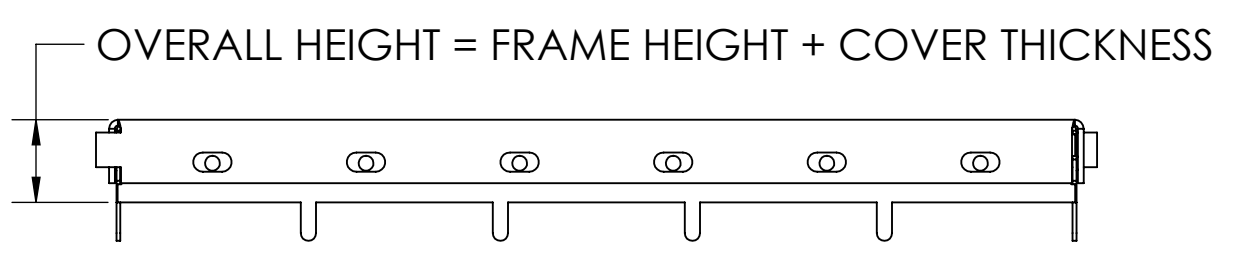


VENT HOLE OPTIONS	
TYPE	OPTION
H1	NONE
H2	Ø .060 SV *
H3	Ø .060 DV *
H4	Ø .080 SV
H5	Ø .080 DV
H6	Ø .118 SV
H7	Ø .118 DV
H8	Ø .156 SV
H9	Ø .156 DV
H20	CUSTOM

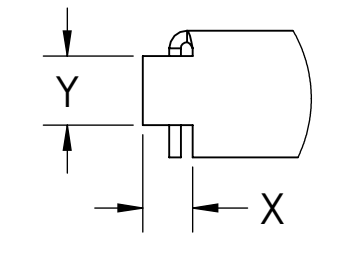


DV HOLE PATTERN

COVER HEIGHT		
TYPE	FRAME HEIGHT	COVER HEIGHT
-	.149 AND BELOW	REFER TO SL-S02R
C3	.150 TO .174	.125
C4	.175 AND UP	.150

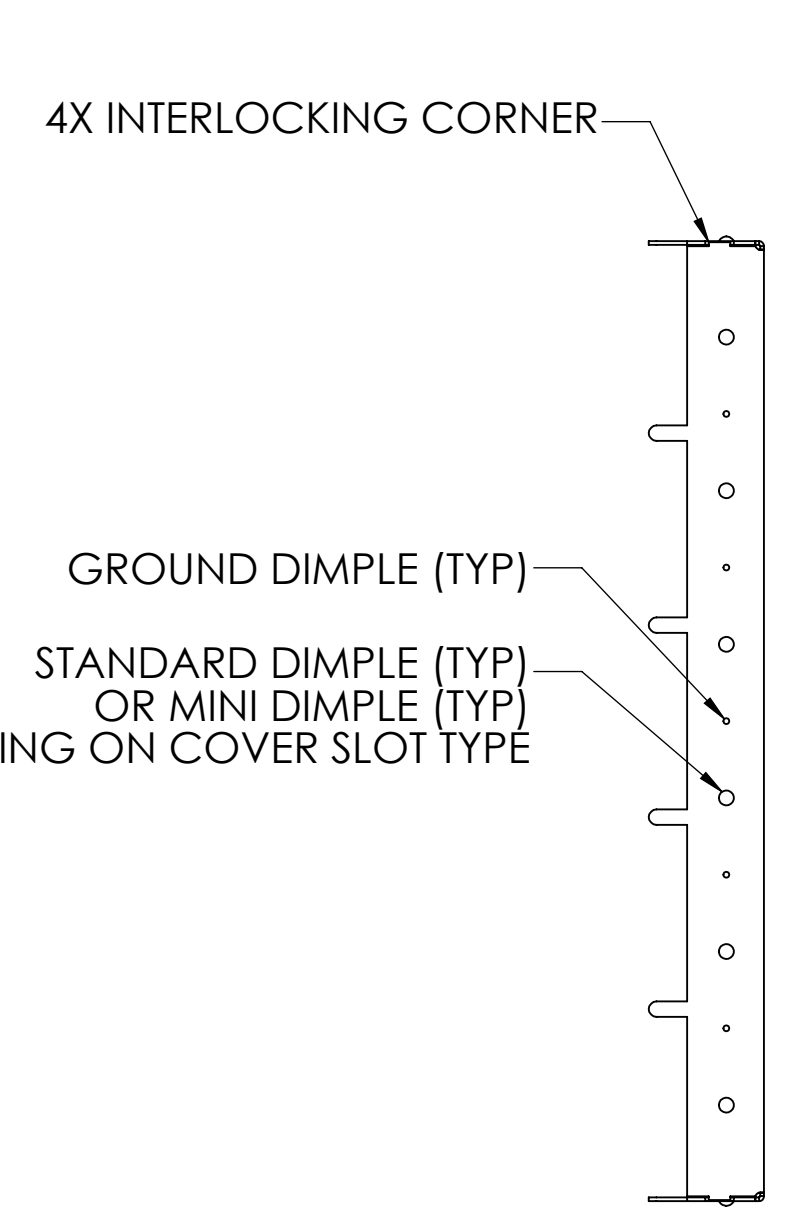


ASSEMBLY

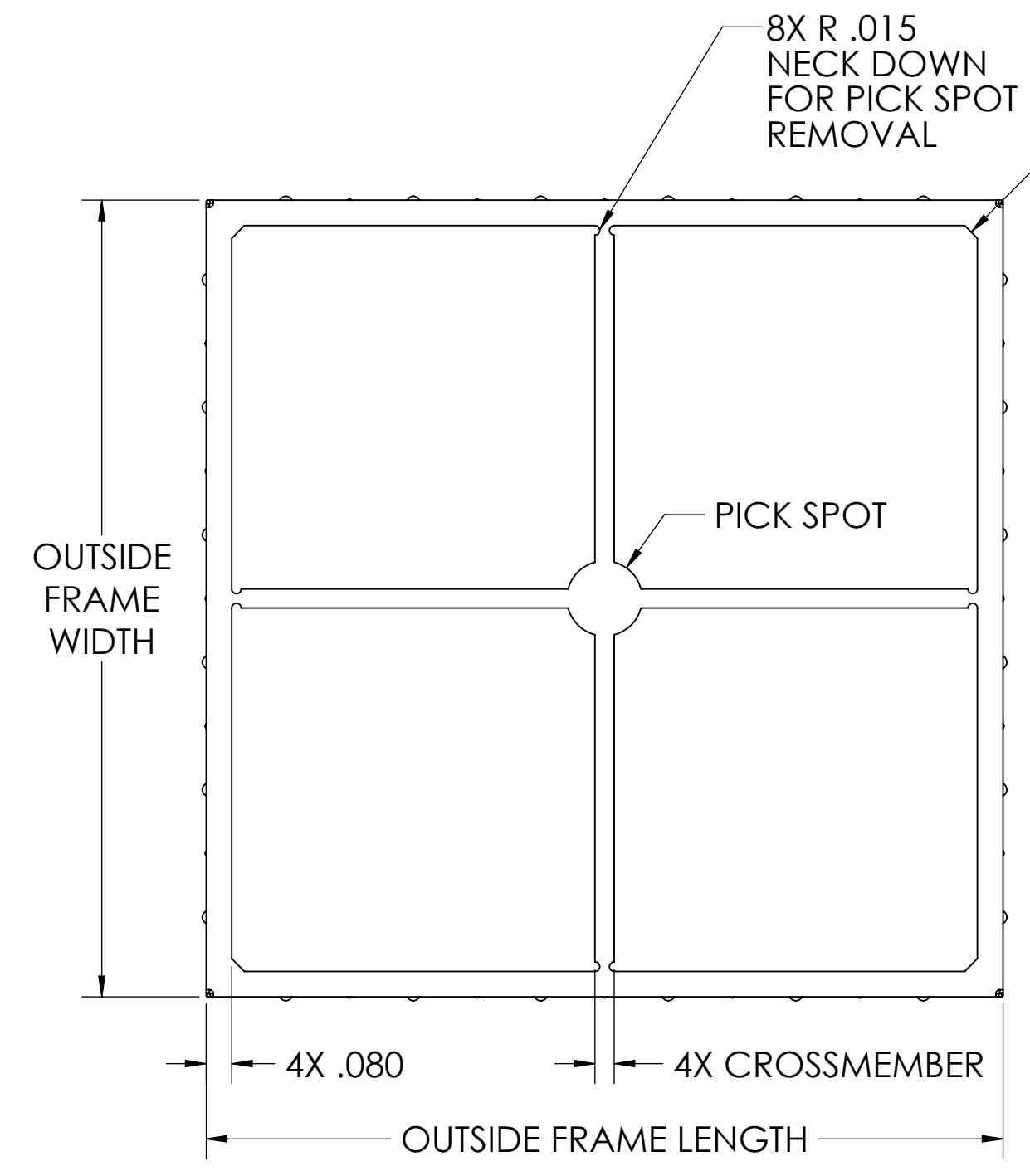


DETAIL A
SCALE 4 : 1
PULL TAB

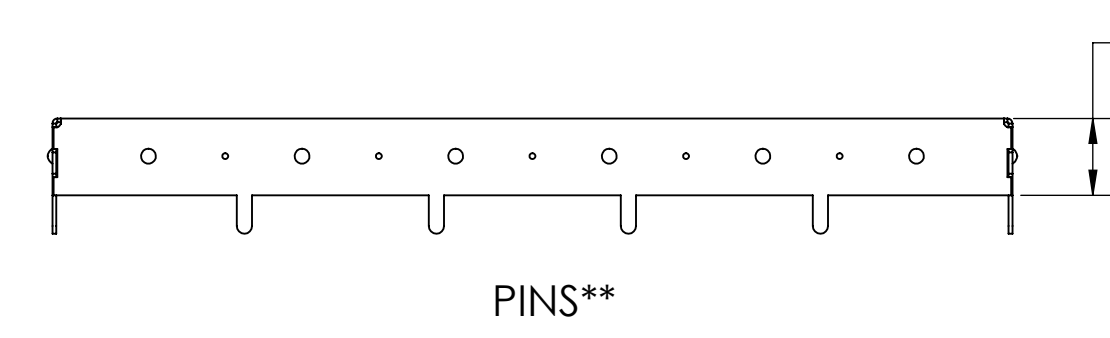
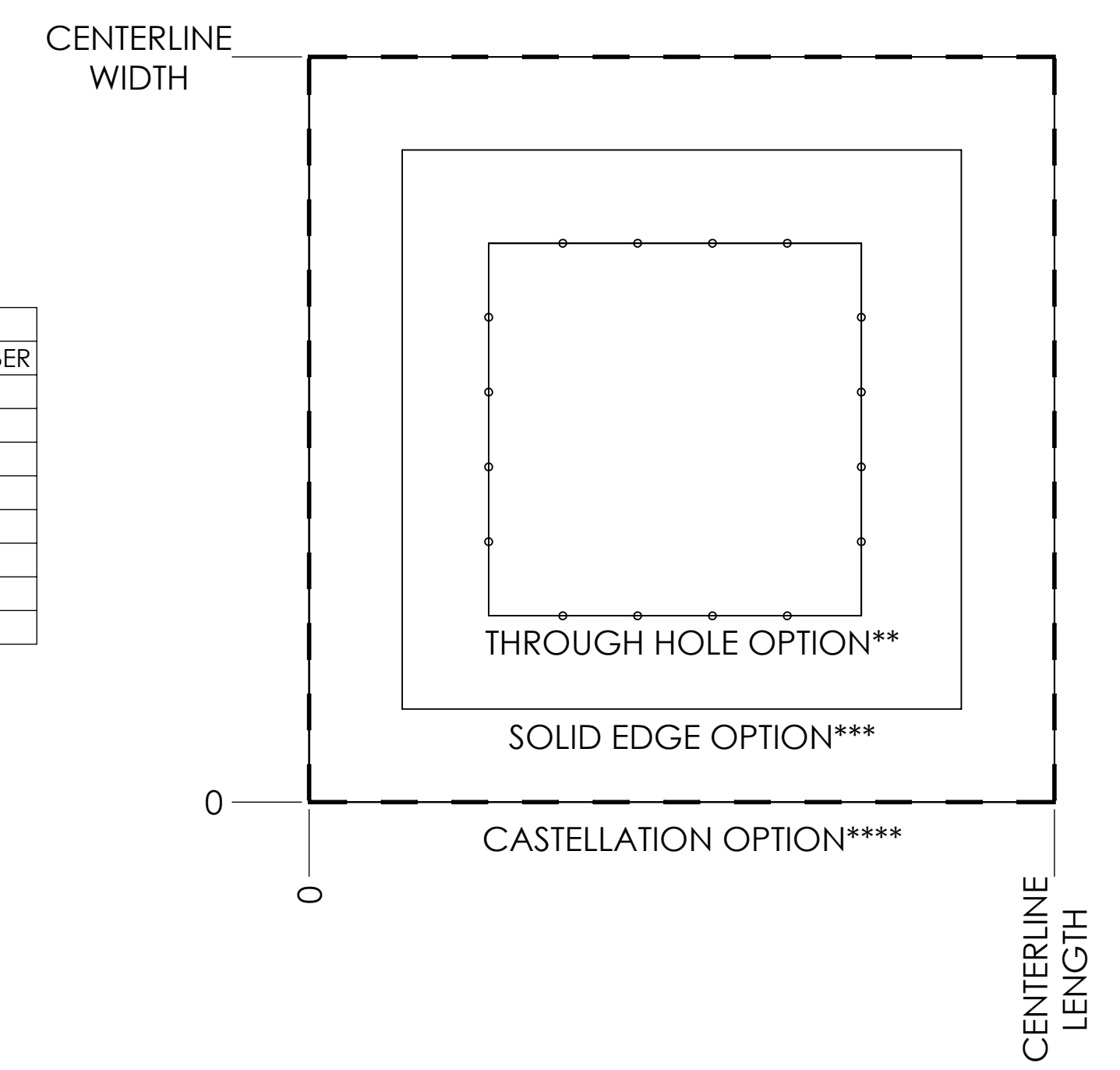
PULL TAB OPTIONS	
TYPE	OPTION
T1	NONE
T2	STANDARD (X=.065, Y=.095)
T3	MINI (X=.050, Y=.031)



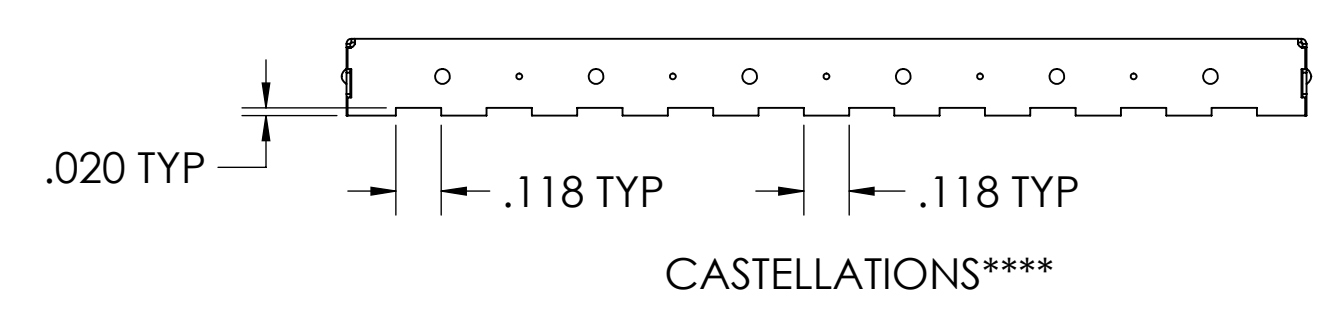
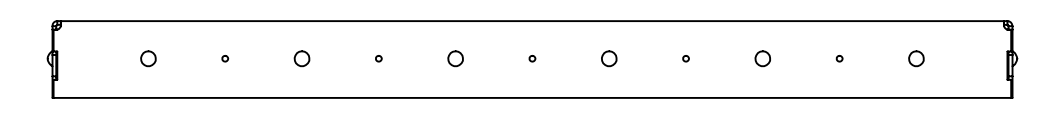
4X INTERLOCKING CORNER
GROUND DIMPLE (TYP)
STANDARD DIMPLE (TYP)
OR MINI DIMPLE (TYP)
DEPENDING ON COVER SLOT TYPE



PICK SPOT OPTIONS		
TYPE	DIAMETER	CROSSMEMBER
N0	N/A	NONE
N1	Ø .236	2X .060
N2	Ø .236	4X .060
N3	Ø .276	2X .060
N4	Ø .276	4X .060
N5	Ø .354	4X .115
N6	Ø .400	4X .080
N20	CUSTOM	CUSTOM



EDGE OPTIONS	
TYPE	OPTION
E0	SOLID EDGE
E2	PIN .020W X .025L
E4	PIN .025W X .120L
E6	PIN .030W X .050L
E8	PIN .030W X .100L
E10	PIN .032W X .045L
E12	PIN .040W X .030L
E14	PIN .040W X .060L
E16	PIN .040W X .100L
E18	PIN .040W X .120L
E20	PIN .040W X .150L
E22	PIN .040W X .165L
E24	PIN .045W X .057L
E26	PIN .045W X .085L
E28	PIN .045W X .110L
E50	CASTELLATIONS
E60	CUSTOM



- NOTES:
- PIN LOCATIONS AND FREQUENCY BASED ON THE APPLICATION
 - FINISH:
 - ALLOY 770: N/A
 - PRE TIN STEEL: BRIGHT (STANDARD) OR MATTE

MATERIAL OPTIONS		PACKAGING OPTIONS	
TYPE	OPTION	TYPE	OPTION
M1	.010 ALLOY 770	P1	STANDARD LAYER PACK
M2	.015 ALLOY 770	P2	CUSTOM TRAY PACK
M3	.010 PRE TIN STEEL	P3	TAPE AND REEL
M4	.015 PRE TIN STEEL	P4	CUSTOM

PART CREATION	
FEATURE	TYPE/VALUE
CENTERLINE LENGTH	
CENTERLINE WIDTH	
OVERALL HEIGHT	
MATERIAL OPTION	
FINISH OPTION, SEE NOTE 2	
PICK SPOT OPTION	
EDGE OPTION	
VENT HOLE OPTION	
COVER HEIGHT	
PULL TAB OPTION	
SLOT OPTION	
PACKAGING OPTION	

UNLESS OTHERWISE SPECIFIED:
 - ALL DIMENSIONS ARE IN INCHES
 - PART SHALL BE FREE OF BURRS AND SHARP EDGES
 - ALL DIMENSIONS SHOWN APPLY BEFORE PLATING AND COATINGS
 - ROHS COMPLIANT PER EU DIRECTIVE 2002/95/EC
 - POI = POINT OF INTERSECTION

THIRD ANGLE PROJECTION

LEADER TECH
a HEICO company
The Leading Edge in Pin Mounting Technology

TITLE: **SLOT-LOK STANDARD ASSEMBLY**

DRAWN BY: - DRAWN DATE: - APPROVED BY: - APPROVAL DATE: -

FINISH: SEE NOTE 2

MATERIAL: SEE MATERIAL OPTIONS TABLE

SCALE: 2:1

CAGE CODE: 4J674

SHEET: 1 OF 1

THIS DOCUMENT CONTAINS PROPRIETARY INFORMATION OWNED BY LEADERTECH. IT IS DEVELOPED AT ITS OWN PRIVATE EXPENSE AND MAY NOT BE USED, REPRODUCED, COPIED, OR DISCLOSED IN WHOLE OR IN PART FOR ANY PURPOSE INCLUDING DESIGN, MANUFACTURE OR PROCUREMENT WITHOUT THE WRITTEN PERMISSION OF LEADERTECH. LEADERTECH DOES NOT GUARANTEE OR WARRANT THE PERFORMANCE CHARACTERISTICS.