

## One-Piece SMS Surface Mount Shield

Leader Tech SMS - Surface Mount Shields offer a highly reliable, cost effective, off-the-shelf solution for most surface mount shielding applications. Our SMS shields are supplied in tape & reel packaging and are suited for any volume application including automated pick and place assembly operations.

Our one piece SMS style can be specified for applications that require no inspection or repair of shielded elements.

*Note: Click on part number to see Technical Drawing*

| ONE-PIECE SURFACE MOUNT SHIELD |                      |              |               |               |                |                     |        |
|--------------------------------|----------------------|--------------|---------------|---------------|----------------|---------------------|--------|
| Part Number*                   | Part Name            | Shield Width | Shield Length | Shield Height | Parts per Reel | Material            | Finish |
| SMS-301                        | Surface Mount Shield | 0.500        | 0.538         | 0.100         | 1000           | .008" Pre-Tin Steel | Matte  |
| SMS-301-N                      | Surface Mount Shield | 0.500        | 0.538         | 0.100         | 1000           | .008" Alloy 770     | N/A    |
| SMS-302                        | Surface Mount Shield | 0.650        | 0.650         | 0.142         | 700            | .008" Pre-Tin Steel | Matte  |
| SMS-302-N                      | Surface Mount Shield | 0.650        | 0.650         | 0.142         | 700            | .008" Alloy 770     | N/A    |
| SMS-303                        | Surface Mount Shield | 1.032        | 1.032         | 0.200         | 300            | .008" Pre-Tin Steel | Matte  |
| SMS-303-N                      | Surface Mount Shield | 1.032        | 1.032         | 0.200         | 300            | .008" Alloy 770     | N/A    |
| SMS-304                        | Surface Mount Shield | 1.260        | 1.260         | 0.236         | 225            | .008" Pre-Tin Steel | Matte  |
| SMS-304-N                      | Surface Mount Shield | 1.260        | 1.260         | 0.236         | 225            | .008" Alloy 770     | N/A    |
| SMS-305                        | Surface Mount Shield | 1.000        | 1.500         | 0.236         | 250            | .008" Pre-Tin Steel | Matte  |
| SMS-305-N                      | Surface Mount Shield | 1.000        | 1.500         | 0.236         | 250            | .008" Alloy 770     | N/A    |
| SMS-306                        | Surface Mount Shield | 1.326        | 1.450         | 0.200         | 300            | .008" Pre-Tin Steel | Matte  |
| SMS-306-N                      | Surface Mount Shield | 1.326        | 1.450         | 0.200         | 300            | .008" Alloy 770     | N/A    |
| SMS-307                        | Surface Mount Shield | 1.747        | 1.747         | 0.384         | 120            | .008" Pre-Tin Steel | Matte  |
| SMS-307-N                      | Surface Mount Shield | 1.747        | 1.747         | 0.384         | 120            | .008" Alloy 770     | N/A    |

## Applications

- Short lead times
- Automatic placement
- Cost effective
- No tooling costs

## Material

Pre-tin plated steel

## One-Piece SMS Shields

- One-Piece
- Form down construction supplied in tape & reel packaging



Shield shown in tape & reel packaging

## Also Available



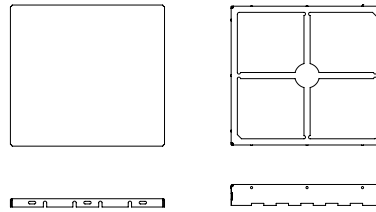
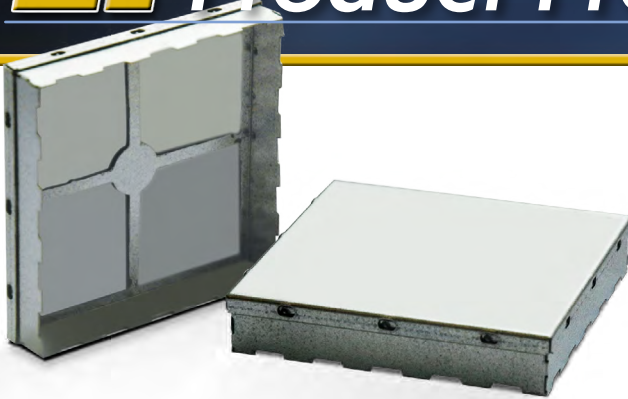
One-Piece SMS Mount Shield (Vented)



# LT Product Profile

00412-A

**LEADER  
TECH**   
a HEICO company  
The Leading Edge in EMI Shielding Technology



## Two-Piece SMS Surface Mount Shield

Leader Tech SMS - Surface Mount Shields offer a highly reliable, cost effective, off-the-shelf solution for most surface mount shielding applications. Our SMS shields are supplied in tape & reel packaging and are suited for any volume application including automated pick and place assembly operations.

For board applications that require inspection, we offer a two piece Leader Tech SMS shield. This style allows for fast and easy removal of the cover providing full access to components.

*Note: Click on part number to see Technical Drawing*

| TWO-PIECE SURFACE MOUNT SHIELD |                      |             |              |              |                |                     |        |
|--------------------------------|----------------------|-------------|--------------|--------------|----------------|---------------------|--------|
| Part Number*                   | Part Name            | Frame Width | Frame Length | Frame Height | Parts per Reel | Material            | Finish |
| SMS-401                        | Surface Mount Shield | 0.500       | 0.538        | 0.100        | 1000           | .008" Pre-Tin Steel | Matte  |
| SMS-401-N                      | Surface Mount Shield | 0.500       | 0.538        | 0.100        | 1000           | .008" Alloy 770     | N/A    |
| SMS-402                        | Surface Mount Shield | 0.650       | 0.650        | 0.142        | 700            | .008" Pre-Tin Steel | Matte  |
| SMS-402-N                      | Surface Mount Shield | 0.650       | 0.650        | 0.142        | 700            | .008" Alloy 770     | N/A    |
| SMS-403                        | Surface Mount Shield | 1.034       | 1.034        | 0.200        | 300            | .010" Pre-Tin Steel | Bright |
| SMS-403-M                      | Surface Mount Shield | 1.032       | 1.032        | 0.200        | 300            | .008" Pre-Tin Steel | Matte  |
| SMS-403-N                      | Surface Mount Shield | 1.032       | 1.032        | 0.200        | 300            | .008" Alloy 770     | N/A    |
| SMS-404                        | Surface Mount Shield | 1.260       | 1.260        | 0.236        | 225            | .008" Pre-Tin Steel | Matte  |
| SMS-404-N                      | Surface Mount Shield | 1.260       | 1.260        | 0.236        | 225            | .008" Alloy 770     | N/A    |
| SMS-405                        | Surface Mount Shield | 1.000       | 1.500        | 0.236        | 250            | .008" Pre-Tin Steel | Matte  |
| SMS-405-N                      | Surface Mount Shield | 1.000       | 1.500        | 0.236        | 250            | .008" Alloy 770     | N/A    |
| SMS-406                        | Surface Mount Shield | 1.326       | 1.450        | 0.200        | 300            | .008" Pre-Tin Steel | Matte  |
| SMS-406-N                      | Surface Mount Shield | 1.326       | 1.450        | 0.200        | 300            | .008" Alloy 770     | N/A    |
| SMS-407                        | Surface Mount Shield | 1.747       | 1.747        | 0.384        | 120            | .008" Pre-Tin Steel | Matte  |
| SMS-407-N                      | Surface Mount Shield | 1.747       | 1.747        | 0.384        | 120            | .008" Alloy 770     | N/A    |
| SMS-452                        | Surface Mount Shield | 1.034       | 1.034        | 0.070        | 300            | .010" Pre-Tin Steel | Bright |

\*SMS-4XX-C: Part number when ordering cover only  
SMS-4XX-F: Part number when ordering frame only

## Applications

- Short lead times
- Automatic placement
- Cost effective
- No tooling costs

## Material

Pre-tin plated steel

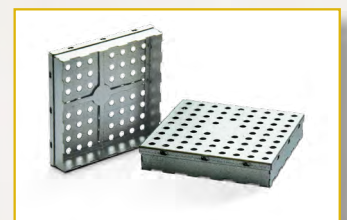
## Two-Piece SMS Shields

- Two-Piece
- Frame & cover, form down construction (frame supplied in tape & reel packaging)



Frame shown in tape & reel packaging

## Also Available



Two-Piece SMS Mount Shield (Vented)



**LEADER  
TECH**   
a HEICO company

**Global EMI Shielding Technology Center**  
12420 Race Track Rd., Tampa, Florida 33626  
866.TECH.EMI (866.832.4364) † 813.855.6921 ‡ 813.855.3291

STATEMENT OF LIEU OF WARRANTY: All technical information and data in this document is based on tests and is believed to be accurate and reliable. Nevertheless, since the products described herein are not provided to conform with mutually accepted specifications and the use thereof is unknown, the manufacturer and seller of the products do not guarantee results, freedom from patent infringement, or suitability of the products for any application thereof. The manufacturer and seller of the products described in this document will provide all possible technical assistance and will replace any products proven defective. No statement or recommendations made by the manufacturer or seller not contained herein shall have any force of effect unless in conformity with an agreement signed by an officer of the seller and manufacturer. Product testing by the purchaser is recommended in order to confirm expected results.

*A passion in all we do*  
[www.LeaderTechInc.com](http://www.LeaderTechInc.com)

ISO 9001: 2008  
CERTIFIED

 RoHS  
COMPLIANT